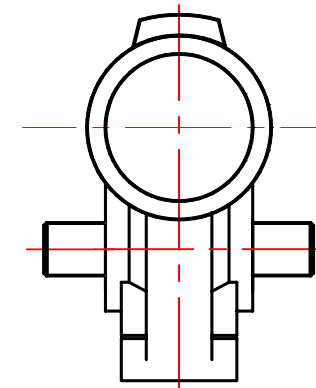
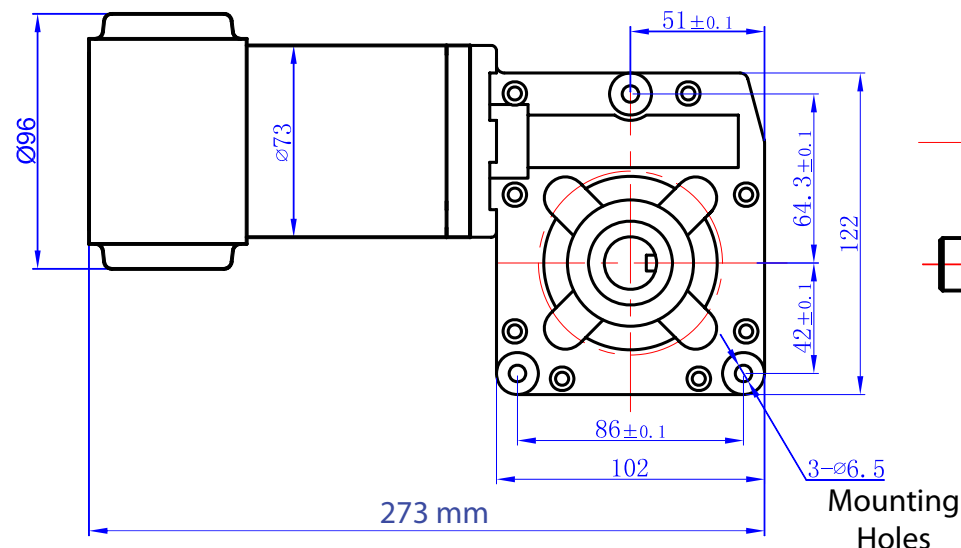
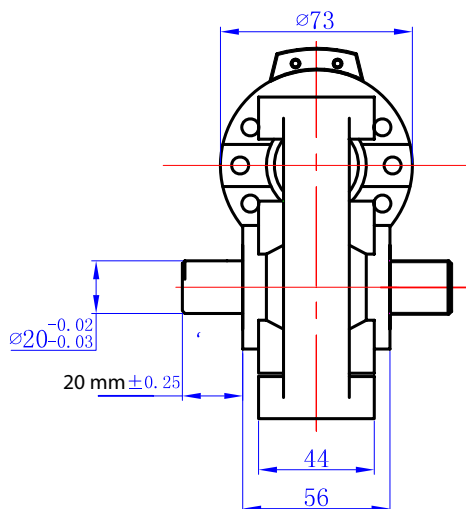
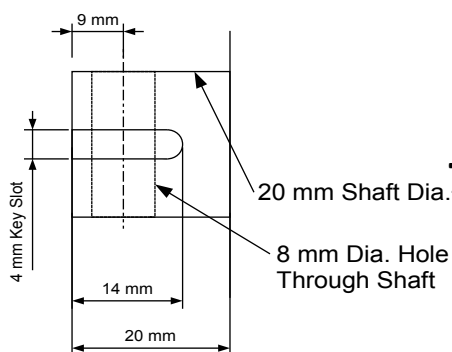




Shaft Detail



73ZYJ08-12LR / 73ZYJ08-24LR Reversible Worm Gear Motor

73ZYJ08-12LR

Operating Voltages:	12 VDC
Continuous Motor Power:	350 Watts
Maximum Motor Power:	900 Watts
No-load Current:	2 Amps
Maximum Current:	90 Amps
No-load Output Speed:	60 RPM +/- 10%
Rated Speed @ 62N.m:	20 RPM
Maximum Torque:	62 N.m (632 Kgf.cm)
Connection:	Spade Terminals (1 cm x 1 cm)
Net Weight:	4 Kilograms

73ZYJ08-24LR

Operating Voltages:	24 VDC
Continuous Motor Power:	350 Watts
Maximum Motor Power:	900 Watts
No-load Current:	1.5 Amps
Maximum Current:	45 Amps
No-load Output Speed:	60 RPM +/- 10%
Rated Speed @ 62N.m:	20 RPM
Maximum Torque:	62 N.m (632 Kgf.cm)
Connection:	Spade Terminals (1 cm x 1 cm)
Net Weight:	4 Kilograms

