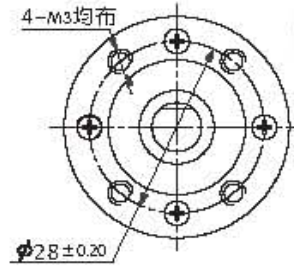
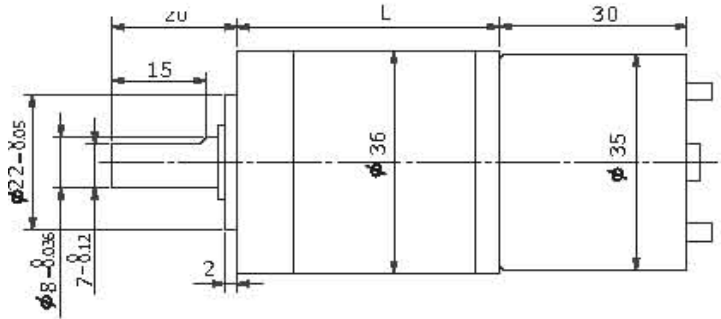




PMDC PLANETARY GEAR MOTOR

www.crestmi.com.au



Motor-Only Technical Data

Model	Rated Voltage (VDC)	No-load Speed (r/min)	No-load Current (mA)	Rated Speed (r/min)	Rated torque (Mn.m)	Output Power (W)	Rated Current (mA)	Stall Torque (mN.m)	Stall Current (A)
RS520-2430	24	3000	45	2400	5	1.2	150	25	0.8

Gearmotor Technical Data

Order Code ⇒		PG2430K19	PG2430K27	PG2430K51	PG2430K100	PG2430K139	PG2430K264
No-load Shaft Speed ⇒	@ 24VDC	157 RPM	111 RPM	59 RPM	30 RPM	21 RPM	11 RPM
	@ 12VDC	78.5 RPM	55.5 RPM	29.5 RPM	15 RPM	10.5 RPM	5.5 RPM
24 VDC - 1.2 Watts O/P - 150 mA Loaded Allowable Torque ⇒	N.m	0.09	0.12	0.21	0.42	0.59	1.0
	Kgf.cm	0.88	1.17	2.06	4.12	5.79	9.81
12 VDC - 0.6 Watts O/P - 75 mA Loaded Torque ⇒	N.m	0.045	0.06	0.105	0.21	0.295	0.5
	Kgf.cm	.441	.59	1.03	2.06	2.89	4.9
Length – L -- (See Diagram)		36 mm	36 mm	42 mm	42 mm	42 mm	48.5 mm

Class:	Precision Industrial
Operating Voltage:	3-24 VDV
Motor Output Power @ 24VDC:	1.2 Watts
Rated Current (24VDC):	150mA
Stall Current (24VDC):	0.8 Amps
Duty Cycle:	Continuous
Output Shaft:	L . 18 mm x D ia. 8 mm with milled flat section
Approximate Weight:	310 grams